

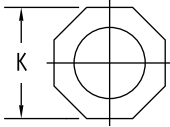
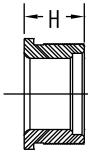
STUFFING TUBES

M24235/10 STUFFING TUBE ASSEMBLY

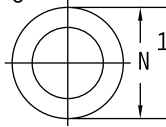
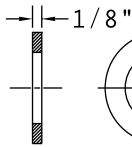
FOR ELECTRIC CABLE PENETRATION OF DECKS AND BULKHEADS ON SHIPS WITHOUT PIPE PROTECTION.

TYPE 30-2A STEEL - SYMBOL: 1600 - 1622

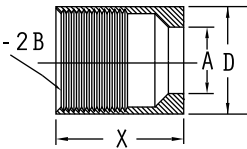
GLAND NUT



GLAND RING



TUBE BODY



CATALOG NUMBERING SYSTEM M24235/10 STUFFING TUBE SAMPLE CATALOG NUMBER:

10-A-ST

└─ "ST" INDICATES STEEL
└─ "AL" INDICATES ALUMINUM
└─ INDICATES LETTER SIZE OF TUBE
└─ INDICATES "TYPE" OF TUBE

(OTHER MATERIALS AVAILABLE)

SIZE	X	A	D	H	K	N	12UN-2B
A	1-3/4	.406	1-1/8	1-1/16	1-1/32	3/4	.875
B	1-3/4	.515	1-1/4	1-1/16	1-1/8	7/8	1.000
C	1-3/4	.640	1-3/8	1-1/16	1-1/4	1.00	1.125
D	1-3/4	.750	1-1/2	1-1/16	1-3/8	1-1/8	1.250
E	1-3/4	.812	1-5/8	1-1/16	1-3/8	1-1/8	1.250
F	1-3/4	.843	1-5/8	1-1/16	1-7/16	1-3/16	1.312
G	1-13/16	.953	1-13/16	1-3/16	1-21/32	1-3/8	1.500
J	1-13/16	1.062	2.00	1-3/16	1-25/32	1-1/2	1.625
K	3-1/8	1.171	2-1/16	1-1/2	1-7/8	1-5/8	1.750
L	3-1/8	1.265	2-1/8	1-1/2	1-15/16	1-11/16	1.812
M	3-1/8	1.406	2-5/16	1-1/2	2-3/16	1-7/8	2.000
N	3-1/8	1.515	2-7/16	1-9/16	2-1/4	1-15/16	2.062
P	3-1/8	1.625	2-3/4	1-9/16	2-11/32	2-1/16	2.188
R	3-1/8	1.750	2-3/4	1-9/16	2-15/32	2-3/16	2.312
S	5-1/8	1.875	3-1/16	2-3/16	2-13/16	2-9/16	2.688
T	5-1/8	2.062	3-1/4	2-3/16	2-31/32	2-3/4	2.875
V	5-1/8	2.187	3-3/8	2-3/16	3-3/32	2-7/8	3.000
W	5-1/8	2.312	3-1/2	2-3/16	3-9/32	3.00	3.125
X	5-1/8	2.500	3-7/8	2-3/16	3-7/16	3-1/8	3.250
Y	5-1/8	2.609	3-7/8	2-3/16	3-9/16	3-1/4	3.375
Z	5-1/8	2.781	3-15/16	2-3/16	3-3/4	3-7/16	3.562
AA	6-7/8	2.875	4-1/8	3-1/8	3-7/8	3-5/8	3.750
BB	6-7/8	3.157	4-1/2	3-1/8	4-1/8	3-7/8	4.000