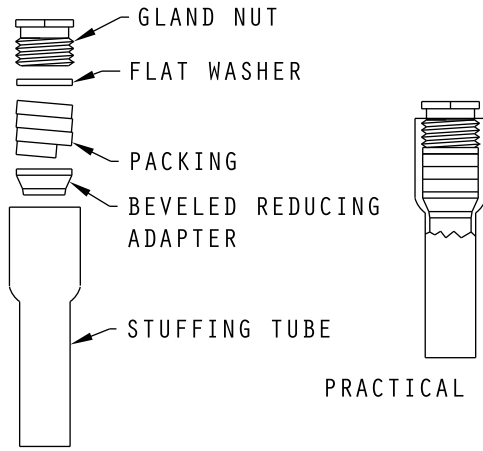
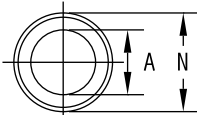
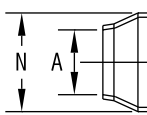


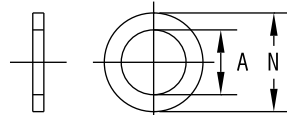
# REDUCING ADAPTER



PRACTICAL APPLICATION



BEVELED REDUCING ADAPTER



FLAT WASHER

CATALOG NUMBER CONSISTS OF ONE BEVELED REDUCING ADAPTER AND ONE FLAT WASHER.

ADDITIONAL SIZES AVAILABLE

CATALOG # STEEL	CATALOG # ALUMINUM	HOST TUBE	N	EFFECTIVE REDUCTION SIZE	A
102BA	112BA	B	.875	A	.406
102DA	112DA	D	1.132	A	.406
102DB	112DB	D	1.132	B	.515
102DC	112DC	D	1.132	C	.640
102GB	112GB	G	1.360	B	.515
102GC	112GC	G	1.360	C	.640
102GD	112GD	G	1.360	D	.750
102GE	112GE	G	1.360	E	.812
102GF	112GF	G	1.360	F	.843
102LG	112LG	L	1.703	G	.953
102LJ	112LJ	L	1.703	J	1.062
102LK	112LK	L	1.703	K	1.172
102NL	112NL	N	1.875	L	1.265
102NM	112NM	N	1.875	M	1.406
102SN	112SN	S	2.562	N	1.515
102SP	112SP	S	2.562	P	1.625
102SR	112SR	S	2.562	R	1.750
102WS	112WS	W	3.000	S	1.875
102WT	112WT	W	3.000	T	2.062
102WV	112WV	W	3.000	V	2.187
102AAX	112AAX	AA	3.625	X	2.500
102AAY	112AAY	AA	3.625	Y	2.609
102AAZ	112AAZ	AA	3.625	Z	2.781