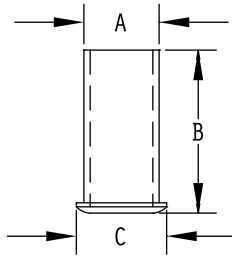
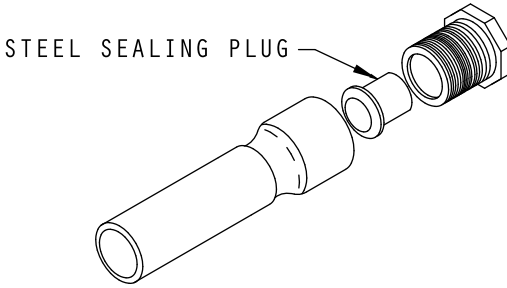


SEALING PLUG

M24235/19 STUFFING TUBE PLUG



A SEALING PLUG IS USED WHEN DESIGN NECESSITATES ELIMINATION OF CABLE IN AN INSTALLED STUFFING TUBE

STEEL	ALUMINUM	TUBE SIZE	C	A	B
100AST	100AAL	A	.71	.38	1.0
100BST	100BAL	B	.84	.50	1.0
100CST	100CAL	C	.96	.54	1.0
100DST	100DAL	D	1.06	.68	1.63
100EST	100EAL	E	1.12	.68	1.63
100FST	100FAL	F	1.15	.68	1.63
100GST	100GAL	G	1.28	.84	1.63
100JST	100JAL	J	1.46	1.05	1.63
100KST	100KAL	K	1.59	1.05	3.0
100LST	100LAL	L	1.68	1.05	3.0
100MST	100MAL	M	1.84	1.32	3.0
100NST	100NAL	N	1.93	1.32	3.0
100PST	100PAL	P	2.03	1.32	3.0
100RST	100RAL	R	2.15	1.66	3.0
100SST	100SAL	S	2.28	1.90	5.0
100TST	100TAL	T	2.46	1.90	5.0
100VST	100VAL	V	2.59	1.90	5.0
100WST	100WAL	W	2.71	2.38	5.0
100XST	100XAL	X	2.90	2.38	5.0
100YST	100YAL	Y	3.03	2.38	5.0
100ZST	100ZAL	Z	3.18	2.38	5.0
100AAST	100AAL	AA	3.28	2.38	3.31